

# G3<sup>®</sup> HF PUMPS

## Injector-Based Automatic Lubrication Grease Pumps

Looking for a higher-flow grease pump that delivers more – more value, more reliability, more control? Graco's new **G3 HF (High Flow) Pumps** are built to perform in tough environments while making service and connectivity easier than ever.

Designed for off-road mobile equipment, low-end-sized mining machines, and medium to high-end-sized construction machines using injectors, the G3 HF offers a smarter combination of rugged durability, safety and intuitive tech. It's the next generation of automatic lubrication – built for today's cost- and safety-conscious operations.

### FEATURES AND BENEFITS

#### VERSATILITY

- Choose from durable 4-, 8- or 12-liter U.V. resistant, high-impact reservoirs

#### USABILITY

- Easy-to-use, internal or external controller options
- Optional cellular or Bluetooth<sup>®</sup> connectivity

#### DURABILITY

These models take the best of Graco's field-proven G3 Max and G3 Standard pumps and upgrade with:

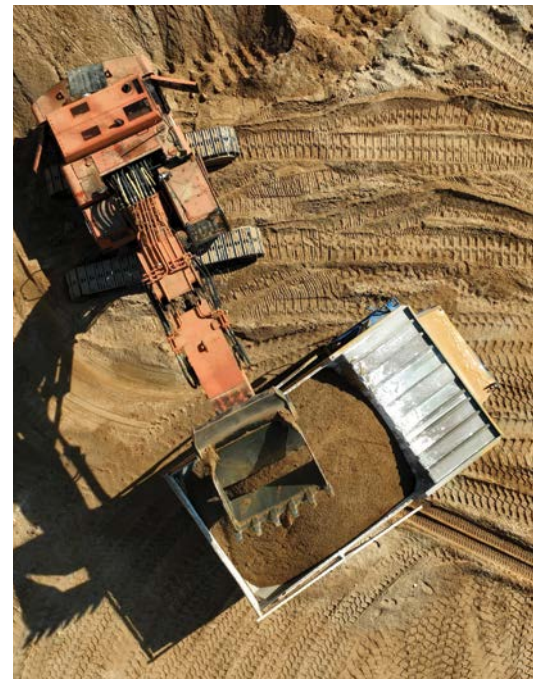
- A more robust motor and gear box
- Heavier-duty pump elements

#### SAFETY

- Auto-fill shut off options
  - Avoid unsafe filling conditions
  - Ability to install pump in hard-to-access locations

#### REPAIRABILITY

- Easy-to-access components simplify troubleshooting and repair
- Repair without removing pump from equipment





## TECHNICAL SPECIFICATIONS

Power Source	24 VDC (18-30 VDC; 3.2 amp current (4 amp with vent valve), inrush/locked rotor 30 amp)
Fluids Handled	NLGI #000 - #2 Greases
Operating Temperature	-22°F to 158°F (-30°C to 70°C)
Reservoir Size	4-, 8- or 12-liters
Control Option	Built-in (G3 HF Max models), GLC X or GLC 2200 (G3 HF Standard models)
Output Pressure	3,500 psi (24.1 MPa, 241 bar)
Pump Output	1.5 in <sup>3</sup> (24.6 cm <sup>3</sup> ) / per minute
Pump Outlet	1/4 -18 NPSF. Mates with 1/4 - 18 NPT male fittings
Protection Grade	IP69K
Instruction Manual	X022361 (G3 HF Standard) / X030566 (G3 HF Max)



## ORDERING INFORMATION

### PUMPS

Part Number	Reservoir Size	Control	Cellular	External Controller* (not included with pump)	Level Detection	AFSO	Pressure
96G617	4 L	Max	No	–	LL Paddle	No	Transducer
96G627	4 L	Max	Yes	–	Follower Plate	No	Transducer
96G400	4 L	Standard	–	GLC 2200	LL Paddle	No	Switch
96G410	4 L	Standard	–	GLC X	LL Paddle	No	Transducer
96G619	8 L	Max	No	–	LL Paddle	No	Transducer
96G635	8 L	Max	No	–	LL Paddle with Follower Plate	No	Transducer
96G636	8 L	Max	No	–	LL Paddle with Follower Plate	Yes	Transducer
96G629	8 L	Max	Yes	–	Follower Plate	No	Transducer
96G637	8 L	Max	Yes	–	Follower Plate	Yes	Transducer
96G411	8 L	Standard	–	GLC 2200	LL Paddle	No	Switch
96G412	8 L	Standard	–	GLC 2200	LL Paddle with Follower Plate	No	Switch
96G407	8 L	Standard	–	GLC X	Follower Plate	No	Transducer
96G413	8 L	Standard	–	GLC X	Follower Plate	Yes	Transducer
96G414	12 L	Standard	–	GLC 2200	LL Paddle	No	Switch
96G415	12 L	Standard	–	GLC 2200	LL Paddle	Yes	Switch
96G416	12 L	Standard	–	GLC X	LL Paddle	No	Transducer
96G417	12 L	Standard	–	GLC X	LL Paddle	Yes	Transducer

\*Controller + Harness kits sold separately. GLC 2200 Controller + Harness Kit: part number 2011788, GLC X Controller + Harness Kit: part number: 2011789.

### ACCESSORIES

Part Number	Description
2011788	GLC 2200 Controller + Harness Kit
2011789	GLC X Controller + Harness Kit
2011787	G3 HF Left/Right Pump Element Output Union Kit
2012394	Vent Valve Kit - Pressure Transducer
2012025	Vent Valve Kit - Pressure Switch
2012024	G3 HF Pump Mounting L-bracket

**For more information, visit [graco.com](https://www.graco.com)**